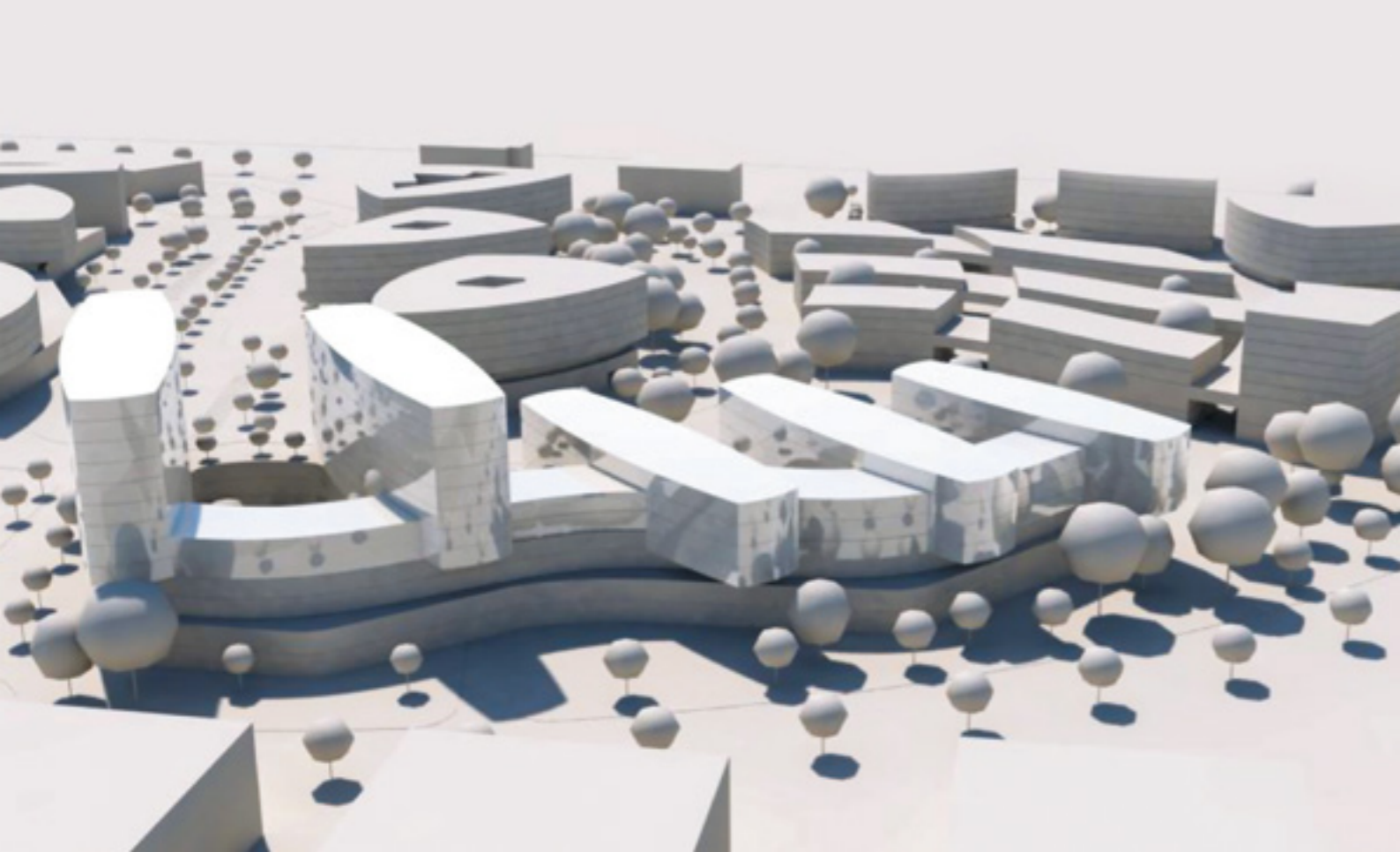


**MASTERPLAN  
APOLLO  
HEALTHCARE  
BOXMEER/NL**





## MASTERPLAN APOLLO HEALTHCARE BOXMEER/NL

The Boxmeer Health Campus is located directly on the A77 in a healthcare zone next to the existing 144-bed Meuse Hospital operated by Pantein. It will meet the growing demand for healthcare services for a population of more than 10 million living within a 70 km radius. The Campus will also provide hospitality and R&D infrastructure for the many multinational companies located nearby.

The Boxmeer Health Campus is being developed in cooperation with experienced partners from the healthcare sector. The Campus includes:

- Hotel accommodation- four star Hotel
- Care Hotel accommodation for patients, visitors, and long-term care patients
- Health Care education and facilities
- Private Health Care facilities
- Laboratories
- Secure storage for pharmaceutical materials
- R&D and educational facilities

and provide an attractive environment for start-ups as well as R&D activities. The open and green landscape will include central parking facilities, recreational areas and open spaces that provide an equally attractive living space for patients, residents, and staff at all times.

- Modern multi-functional Health Campus
- Located on the A77
- Land plot 95 276 sqm
- Development GFA 150 000 sqm
- 1 350 parking spaces

The campus is designed as an ecosystem where organizations strengthen each other through collaboration and interaction. It will foster innovation



## OUR SERVICE PROVIDERS

The seasoned management team works with high profile experts in the industry to create high quality projects. Well reputed business partners are chosen for the design and construction phase.

DREES &  
SOMMER

RAU

Colliers

Ten Brinke  
Group

suter +  
renner

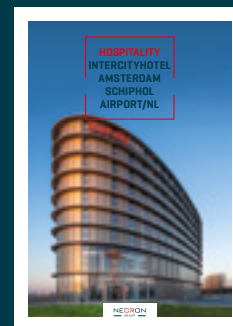
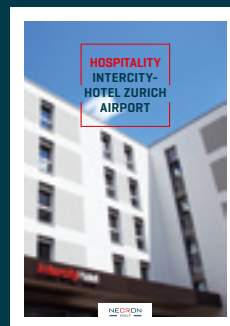
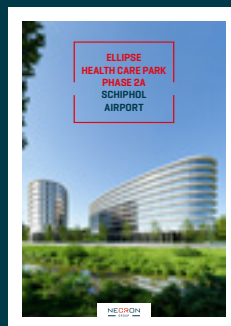
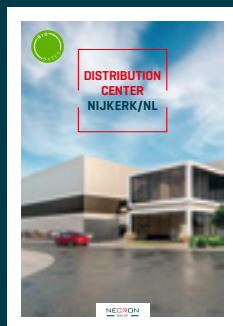
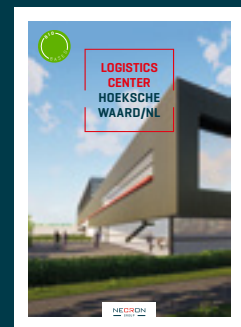
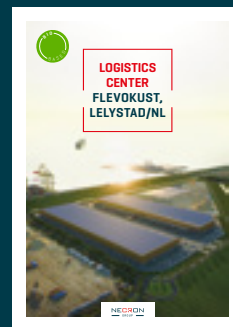
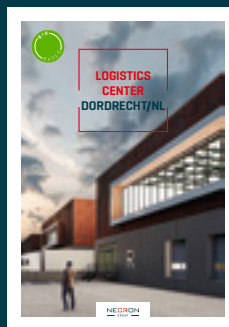
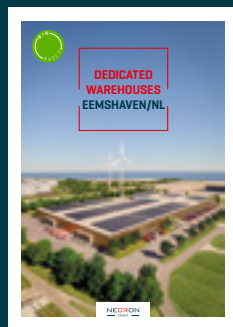
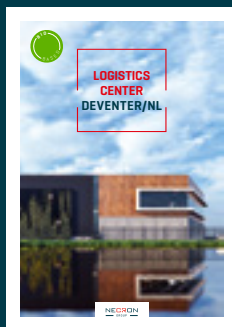
# TRUST, CONFIDENCE AND SECURITY ARE OUR VALUES. PERFORMANCE OUR CREDO.

Necron Group AG is a Swiss based real estate investment and development company.

Necron's strategy is to secure plots for the development of light industrial, hotels, offices, secured warehouses, health care projects and other commercial buildings. What began years ago with projects in the hospitality sector has developed over the years into a holistic solution provider in the development of real estate projects. Necron Group anticipates the market, creates supply chains and jobs. Under this title, the Necron projects are specifically interesting for qualified investors.

Necron's projects are characterized by a consistent circulareconomy. In 2022, Necron has decided to strive in all its development projects for the BREEAM "excellent" certificate at least.

## DISCOVER OUR PROJECTS.



Necron Group AG | Bahnhofstrasse 16 | 6300 Zug

[www.necron.com](http://www.necron.com)

**NECRON**  
GROUP